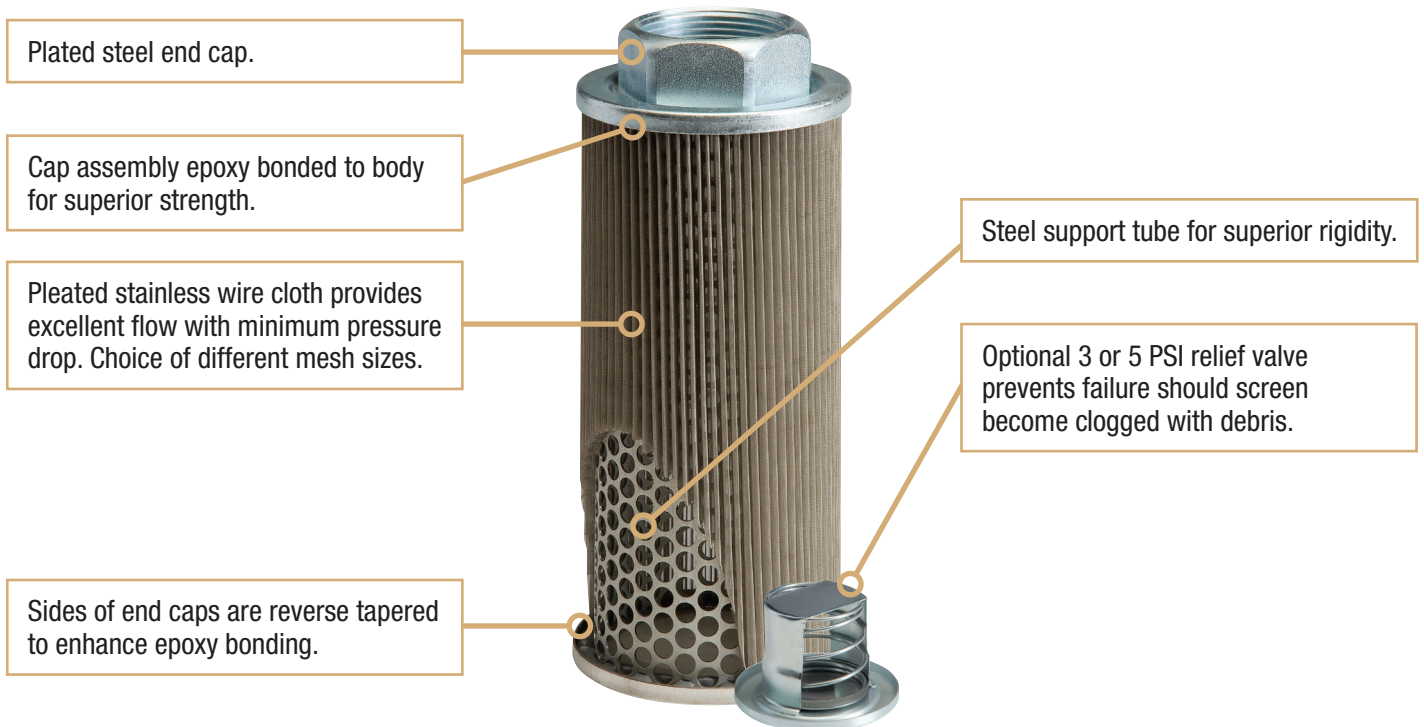


## H7 Series Suction Strainers



### Benefits

- Reliable, low-cost filtering of petroleum based fluids, fire-resistant fluids (phosphate esters and water glycols), lubricating oils, coolants, fuels and water
- Flow rates to 150 gpm

### Features

Female NPT Steel Hex Cap Suction strainers are used in petroleum based fluids, coolants, lubricants, and many process fluids.

Designed as in-tank strainer elements for direct installation into suction lines of pumps; should always be installed below the minimum fluid level of the reservoir.

Optional relief valves are available in either 3 PSI or 5 PSI allowing dirty filters to by-pass fluid so your pumps wont burn out.

### Options

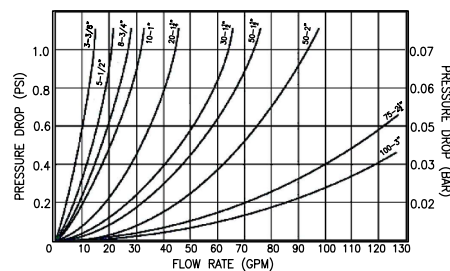
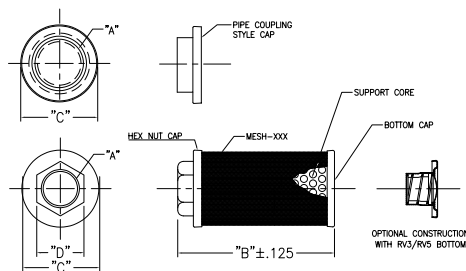
- 3 or 5 PSI bypass
- Custom sizes, screens and adapters
- BSPP available upon request

## Distributors Wanted!

# H7 Series Suction Strainers

Part Number	GPM	"A" NPT Size	"B" Length	"C" Diameter	"D" Hex Diameter	Screen Area (SQ-IN)
H7-3-3/8	3	3/8	2.25	1.85	0.87	35
H7-5-1/2	5	1/2	3.10	2.63	1.10	68
H7-5-3/4	5	3/4	3.55	2.63	1.30	68
H7-5-1	5	1	3.71	2.63	1.60	68
H7-8-1/2	8	1/2	3.10	2.63	1.10	68
H7-8-3/4	8	3/4	3.55	2.63	1.30	68
H7-8-1	8	1	3.71	2.63	1.60	68
H7-10-1/2	10	1/2	4.73	2.63	1.10	106
H7-10-3/4	10	3/4	5.18	2.63	1.30	106
H7-10-1	10	1	5.35	2.63	1.60	106
H7-20-1	20	1	6.85	3.38	1.60	165
H7-20-1-1/4	20	1-1/4	6.85	3.38	1.85	165
H7-20-1-1/2	20	1-1/2	6.85	3.38	2.10	165
H7-30-1	30	1	8.01	3.38	1.60	235
H7-30-1-1/4	30	1-1/4	8.01	3.38	1.85	235
H7-30-1-1/2	30	1-1/2	8.01	3.38	2.10	235
H7-50-1-1/2	50	1-1/2	9.85	3.94	2.10	340
H7-50-2	50	2	9.85	3.94	2.75	340
H7-75-2-1/2	75	2-1/2	10.10	5.12	*	402
H7-75-3	75	3	10.13	5.12	*	402
H7-100-2-1/2	100	2-1/2	11.80	5.12	*	504
H7-100-3	100	3	11.83	5.12	*	504
H7-150-2-1/2	150	2-1/2	12.47	5.12	*	540
H7-150-3	150	3	12.50	5.12	*	540

\*Denotes parts use pipe coupling style cap instead of hex nut style.  
All dimensions are in inches and for reference only.



## Filter Mesh: 100 Mesh is Standard

Mesh Suffix XXX	Mesh Opening Microns	Open Area (%)
200	69	29
100	155	36
60	300	41
30	681	64

## How to Order: Female 75 GPM 3" 60 mesh with 5 PSI relief valve

Style	GPM	NPT	Mesh	Relief Valve*
H7	75	3	60	RV5**

\*If no relief valve is required, leave blank

\*\*Relief valve comes in 3 PSI or 5 PSI version